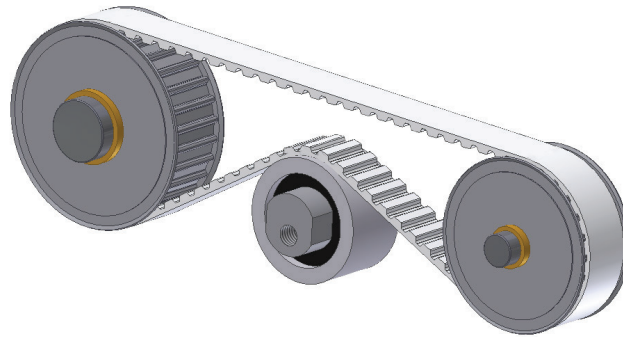


USA BFX Extrusion - Production Capabilities
-Completing the circle of total product flexibility-



With the introduction of domestic-manufactured truly endless "BFX" belts BRECOflex CO., L.L.C. offers quick delivery on the widest range of products in the industry. In addition to the hundreds of stock BFX lengths listed in the B212 catalog, most available for immediate delivery, we now offer USA made custom BFX length and material combinations listed below. Our new manufacturing capability joins with existing capabilities in the open ended and welded belt constructions to deliver the fastest delivery possible and satisfy the broadest range of applications.

Industry-leading 8 day delivery time for custom truly endless belts meshes perfectly with our 8 day custom pulley delivery to provide you with an unmatched total drive solution.

Custom Truly Endless Lengths and Materials - BFX		
	Metric	English
Length Range	1080/1100-6500mm	43.0-255.5"
Max Width	100mm	4.00"
PAZ	Available (see below)	
PAR, T-cover	Added as post-process	
DL, DR	6 weeks	

- PAZ production minimum is one sleeve with 8 day delivery or no minimum with 5 week delivery.
- Please refer to the chart on the reverse page for material combination availability and minimum material run.
 - ST1 - White 92 Shore A durometer
 - ST2 - Clear 85 Shore A durometer
 - FDA1 - Clear 92 Shore A durometer FDA approved
 - FDA2 - Clear 85 Shore A durometer FDA approved
 - AU1 - Clear 92 Shore A, FDA approved detergent/hydrolysis resistant

T5	1080 to 6500mm					
	Steel	VA	Kevlar	Steel PAZ	VA PAZ	Kevlar PAZ
ST1	1 sleeve min.			1 sleeve min.		
ST2	2 sleeve min.			2 sleeve min.		
FDA1	2 sleeve min.			2 sleeve min.		
FDA2	2 sleeve min.			2 sleeve min.		
AU1	2 sleeve min.			2 sleeve min.		

AT5	1080 to 6500mm					
	Steel	VA	Kevlar	Steel PAZ	VA PAZ	Kevlar PAZ
ST1	1 sleeve min.			1 sleeve min.		
ST2	2 sleeve min.			2 sleeve min.		
FDA1	2 sleeve min.			2 sleeve min.		
FDA2	2 sleeve min.			2 sleeve min.		
AU1	2 sleeve min.			2 sleeve min.		

T10	1080 to 6500mm					
	Steel	VA	Kevlar	Steel PAZ	VA PAZ	Kevlar PAZ
ST1	1 sleeve min.	2 sleeve min.	2 sleeve min.	1 sleeve min.	2 sleeve min.	2 sleeve min.
ST2	2 sleeve min.	2 sleeve min.	2 sleeve min.	2 sleeve min.	2 sleeve min.	2 sleeve min.
FDA1	2 sleeve min.	2 sleeve min.	2 sleeve min.	2 sleeve min.	2 sleeve min.	2 sleeve min.
FDA2	2 sleeve min.	2 sleeve min.	2 sleeve min.	2 sleeve min.	2 sleeve min.	2 sleeve min.
AU1	2 sleeve min.	2 sleeve min.	2 sleeve min.	2 sleeve min.	2 sleeve min.	2 sleeve min.

AT10	1080 to 6500mm					
	Steel	VA	Kevlar	Steel PAZ	VA PAZ	Kevlar PAZ
ST1	1 sleeve min.	2 sleeve min.	2 sleeve min.	1 sleeve min.	2 sleeve min.	2 sleeve min.
ST2	2 sleeve min.	2 sleeve min.	2 sleeve min.	2 sleeve min.	2 sleeve min.	2 sleeve min.
FDA1	2 sleeve min.	2 sleeve min.	2 sleeve min.	2 sleeve min.	2 sleeve min.	2 sleeve min.
FDA2	2 sleeve min.	2 sleeve min.	2 sleeve min.	2 sleeve min.	2 sleeve min.	2 sleeve min.
AU1	2 sleeve min.	2 sleeve min.	2 sleeve min.	2 sleeve min.	2 sleeve min.	2 sleeve min.

AT20	1100 to 6500mm					
	Steel	VA	Kevlar	Steel PAZ	VA PAZ	Kevlar PAZ
ST1	1 sleeve min.			1 sleeve min.		
ST2	2 sleeve min.			2 sleeve min.		
FDA1	2 sleeve min.			2 sleeve min.		
FDA2	2 sleeve min.			2 sleeve min.		
AU1	2 sleeve min.			2 sleeve min.		

H	1092.2 to 6489.7mm					
	Steel	VA	Kevlar	Steel PAZ	VA PAZ	Kevlar PAZ
ST1	1 sleeve min.	2 sleeve min.		1 sleeve min.	2 sleeve min.	
ST2	2 sleeve min.	2 sleeve min.		2 sleeve min.	2 sleeve min.	
FDA1	2 sleeve min.	2 sleeve min.		2 sleeve min.	2 sleeve min.	
FDA2	2 sleeve min.	2 sleeve min.		2 sleeve min.	2 sleeve min.	
AU1	2 sleeve min.	2 sleeve min.		2 sleeve min.	2 sleeve min.	

As of 11/12/15